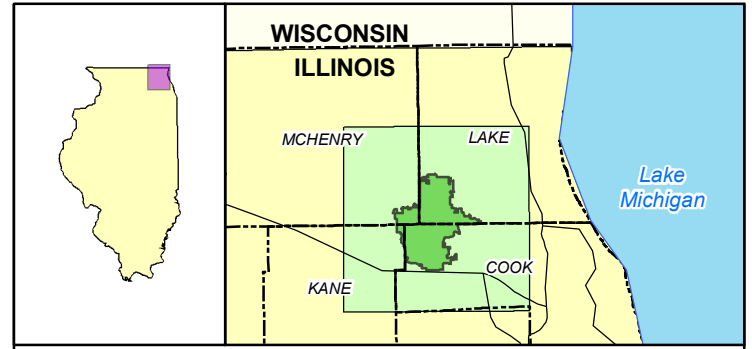
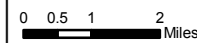
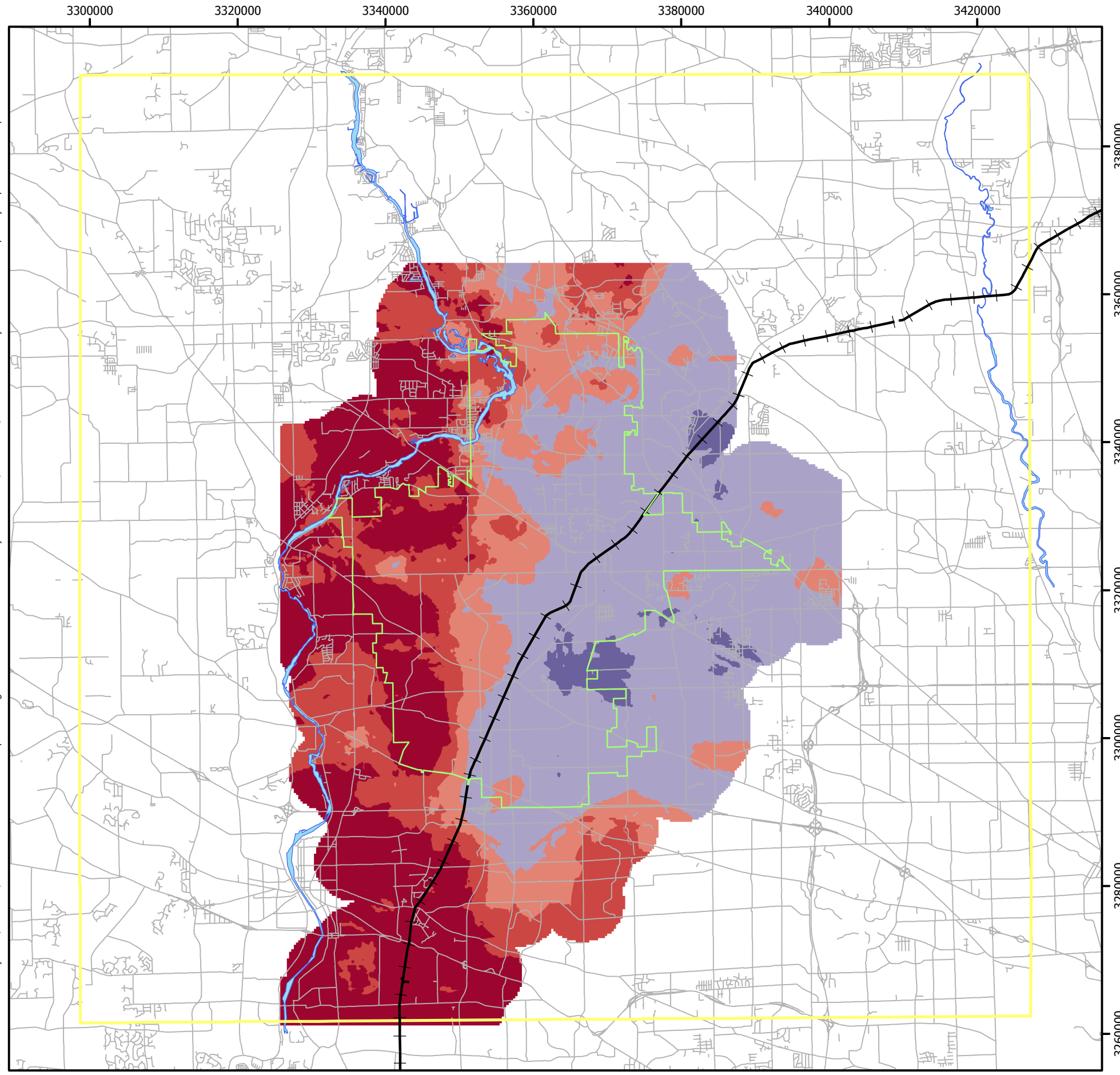


Barrington Area Council of Governments makes no warranty, representation, or guarantee of any kind regarding maps, data, or textual information of any provided herein. Illustrations here are for reference only and Barrington Area Council of Governments makes no warranty as to the fitness of this information for any particular purpose. The Barrington Area Council of Governments assumes no liability either for any errors, omissions, or inaccuracies in the information provided regardless of the cause of such or for any decision made, action taken, or action not taken by the user in reliance upon any maps or information provided herein.



### State and Region Overview Maps

Produced by: Barrington Area Council of Governments  
 Publish Date: September 2008  
 Data Sources: Illinois Department of Natural Resources  
 Barrington Area Geographic Information System  
 Lake, Cook, Kane, and McHenry Counties  
 Illinois State Geological Survey - Well data

Description: This map classifies areas as critical, important, moderate, poor, or very poor recharge potential.

Method: Raw: This surface was interpolated using the kriging method.

### Legend

- BACOG Boundary
- EJ & E Rail Line
- Study Area
- Roads
- River
- Critical Recharge
- Important Recharge
- Moderate Recharge
- Poor Recharge
- Very Poor Recharge



Figure 2  
**Recharge Areas for the BACOG Region and Portions Southwest along the EJ & E Railroad**