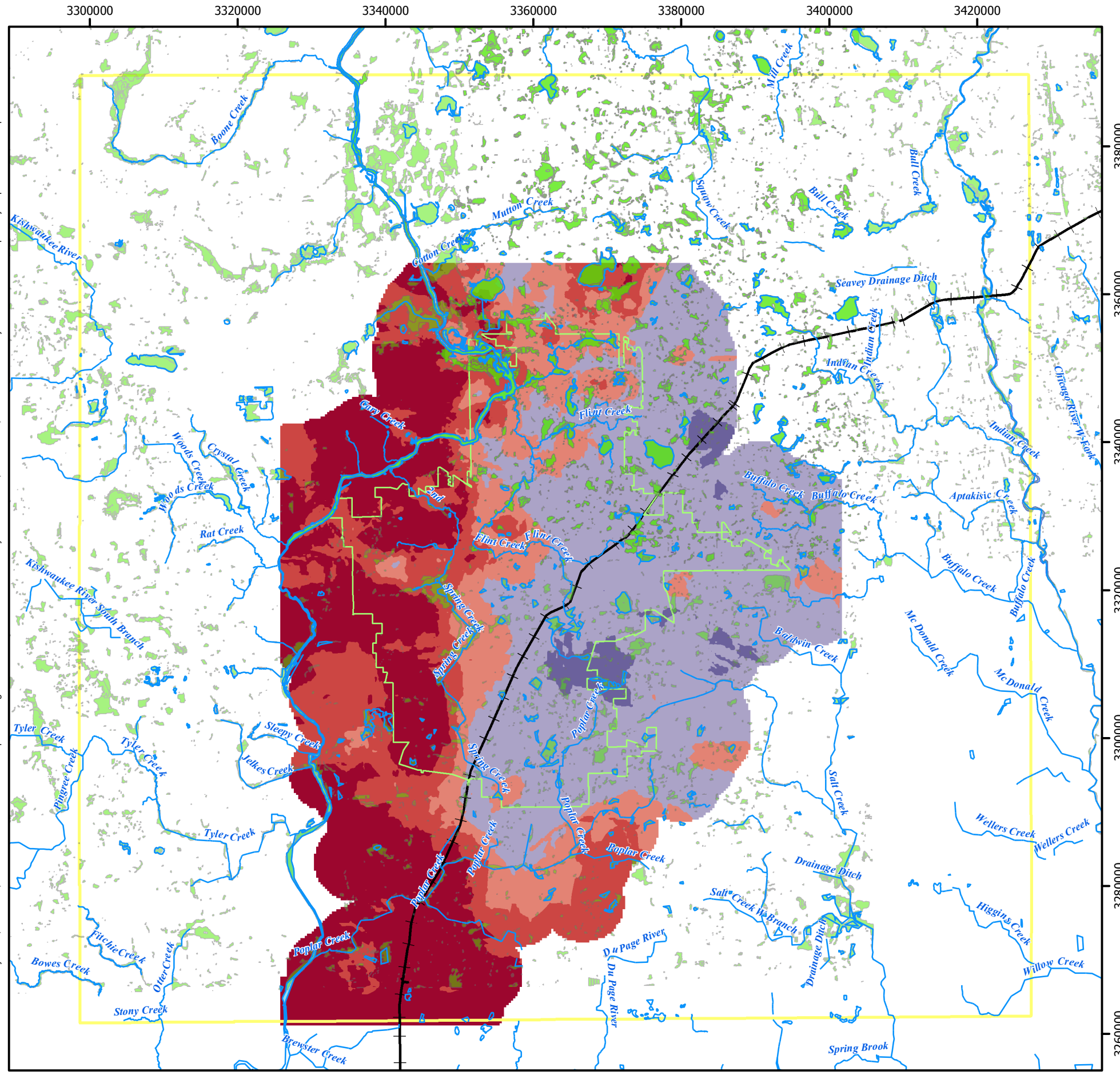
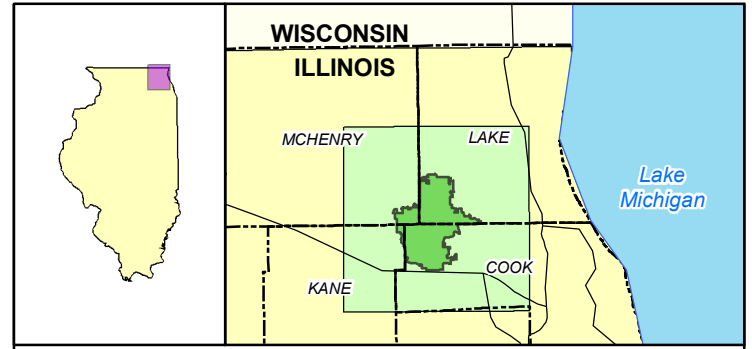


Barrington Area Council of Governments makes no warranty, representation, or guarantee of any kind regarding maps, data, or textual information of any provided herein. Illustrations here are for reference only and Barrington Area Council of Governments makes no warranty as to the fitness of this information for any particular purpose. The Barrington Area Council of Governments assumes no liability either for any errors, omissions, or inaccuracies in the information provided regardless of the cause of such or for any decision made, action taken, or action not taken by the user in reliance upon any maps or information provided herein.



0 0.45 0.9 1.8 Miles



State and Region Overview Maps

Produced by: Barrington Area Council of Governments
 Publish Date: September 2008
 Data Sources: Illinois Department of Natural Resources
 Barrington Area Geographic Information System
 Lake, Cook, Kane, and McHenry Counties
 Illinois State Geological Survey - Well data

Description: This is a map classifying recharge values
 Method: Raw: This surface was interpolated using the kriging method.

Legend

- Hydrography
- Wetland Polygons
- BACOG Boundary
- EJ & E Rail Line
- Study Area
- River
- Critical Recharge
- Important Recharge
- Moderate Recharge
- Poor Recharge
- Very Poor Recharge



Figure 3
Recharge Areas for the BACOG Region and Portions Southwest along the EJ & E Railroad with Wetlands, Streams, and Rivers Overlay