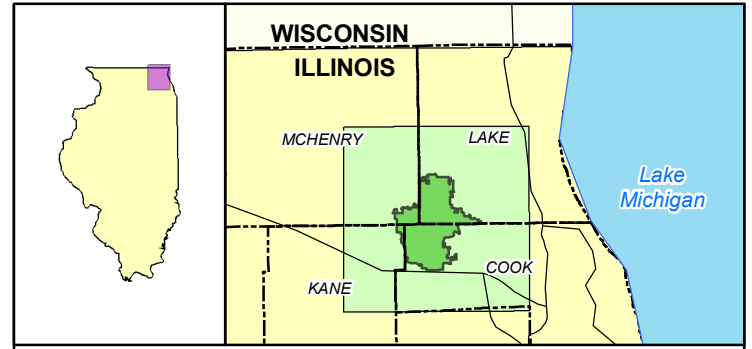
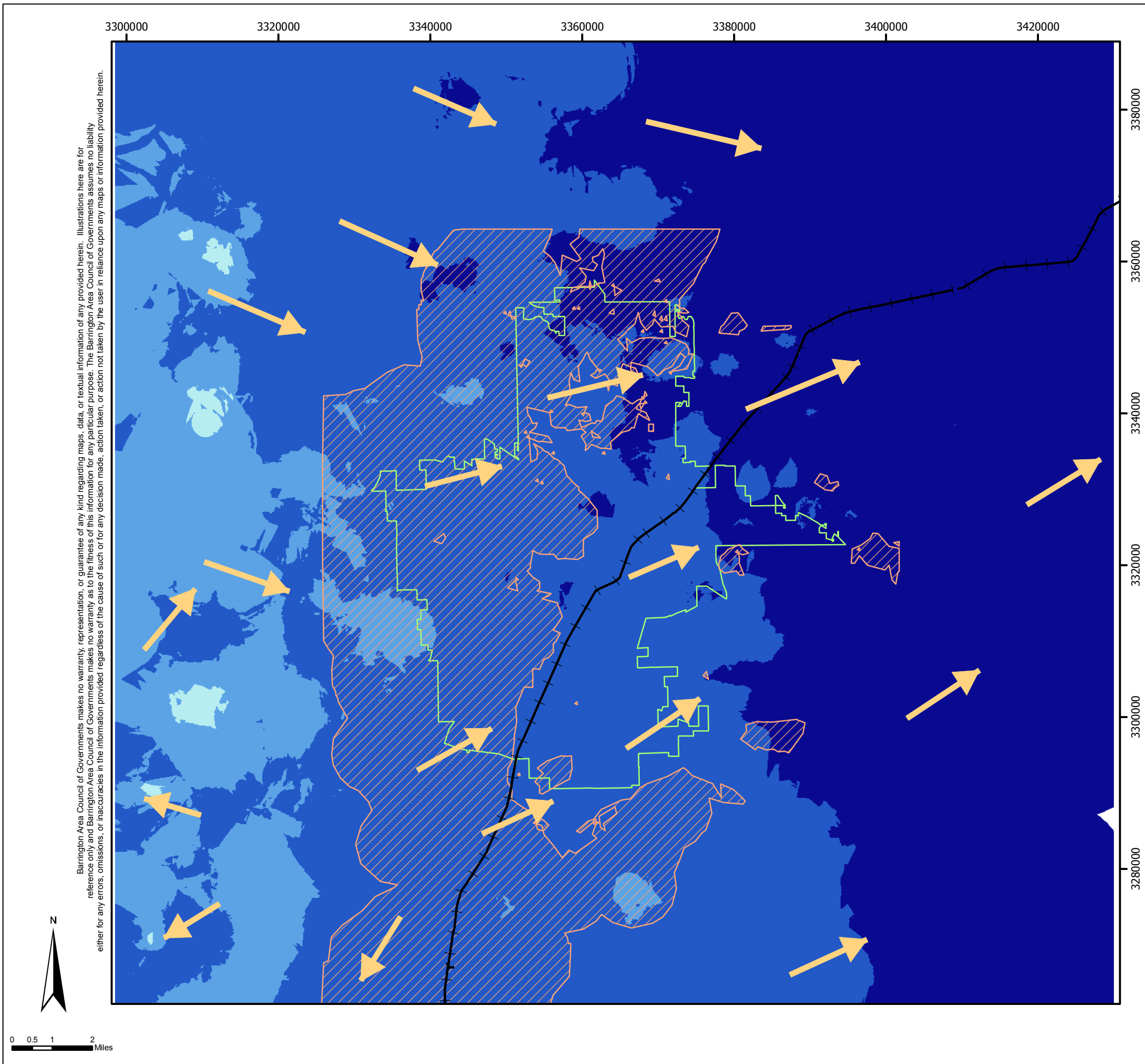


Barrington Area Council of Governments makes no warranty, representation, or guarantee of any kind regarding maps, data, or textual information of any provided herein. Illustrations here are for reference only and Barrington Area Council of Governments makes no warranty as to the fitness of this information for any particular purpose. The Barrington Area Council of Governments assumes no liability either for any errors, omissions, or inaccuracies in the information provided regardless of the cause of such or for any decision made, action taken, or action not taken by the user in reliance upon any maps or information provided herein.



### State and Region Overview Maps

Produced by: Barrington Area Council of Governments  
 Publish Date: September 2008  
 Data Sources: Illinois Department of Natural Resources  
 Barrington Area Geographic Information System  
 Lake, Cook, Kane, and McHenry Counties  
 Illinois State Geological Survey - Well data

Description: This map shows the bedrock topography surface and general flow directions. Overlaid are areas of moderate, important, and critical recharge.

Method: Raw Well point data was purchased from the ISGS, translated into units and examined for quality control and queried to isolate the bedrock surface. This surface was interpolated using the kriging method.

**Legend**

- Flow Direction
- BACOG Boundary

**Recharge**

- Moderate to Critical Recharge Areas

**Bedrock Topography**

**Elevation in Feet**

- 466 - 600
- 600 - 690
- 690 - 730
- 730 - 900



Figure 4  
**General Groundwater Flow Directions at the Bedrock/Drift Interface with a Recharge Overlay**